

Deterrence Dispensed Presents

PeasantPlinker 22lr Glock Mag

A 22lr magazine for Glocks based on the AdvantageArms conversion kit.



A /u/NostraVoluntasUnita project with special thanks to wickedmainah
Support the Dev:
BTC address: 1F6NyVQRWtji6TAQCv58QPgshgwqUN41eh
ETH address: 0xcc4aFF7266D5A7Ee92158dBdaD1a9D44808def82

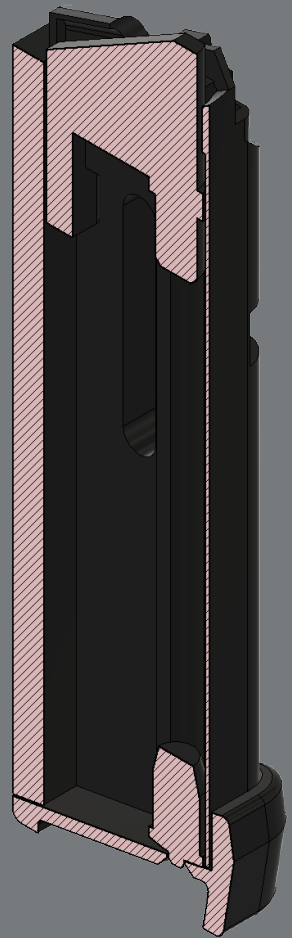


Preface

Why does this magazine exist?
With the rising price of ammunition, 22lr continues to be a cheap way to get in your range time, keeping you and your wallet safe.

This magazine is reverse engineered from AdvantageArms 22lr Glock19 conversion kits factory magazine, with several improvements made to the original and optimized for printing with no supports, cheap springs, and minimal material.

This guide is for informative purposes only. Follow all local laws and regulations before printing.



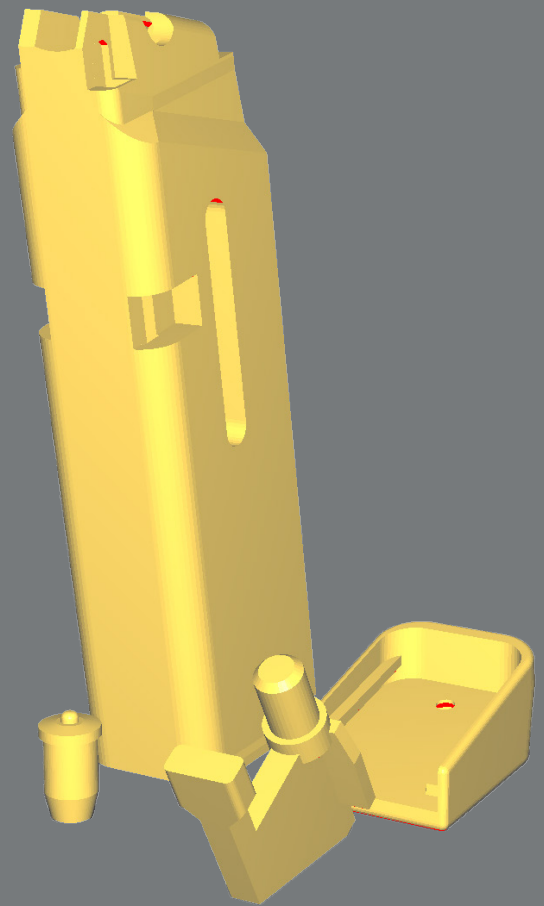
Print Settings

**All parts can be printed without support.
Use PLA+, .16 layer height, 5 walls.
Infill at 15% Lines worked great for me.**

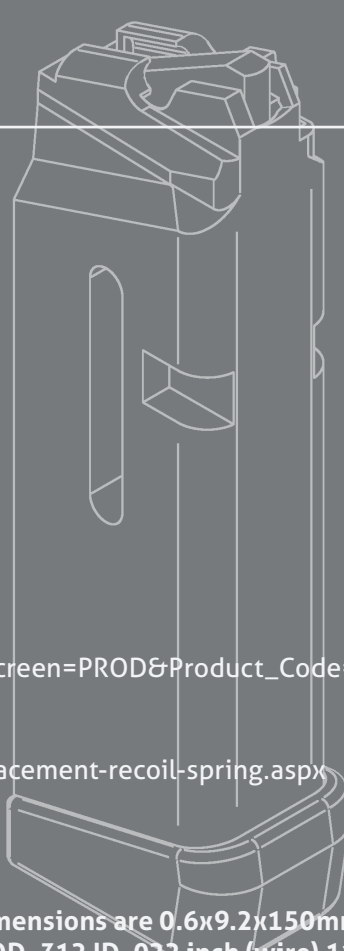
The orientation shown is easy to achieve in Prusa and Cura slicers using the face select option, Cura can sometimes be a bit goofy on the Follower so double check its actually sitting flat before printing.

The slide-lock tab on the follower and mag-catch detents on the magazine body do not need printed supports, but at most need a small trim with some flush cutters or a quick pass with a flat file.

If you have adhesion issues on the smaller parts, raft or brim work fine.



Parts



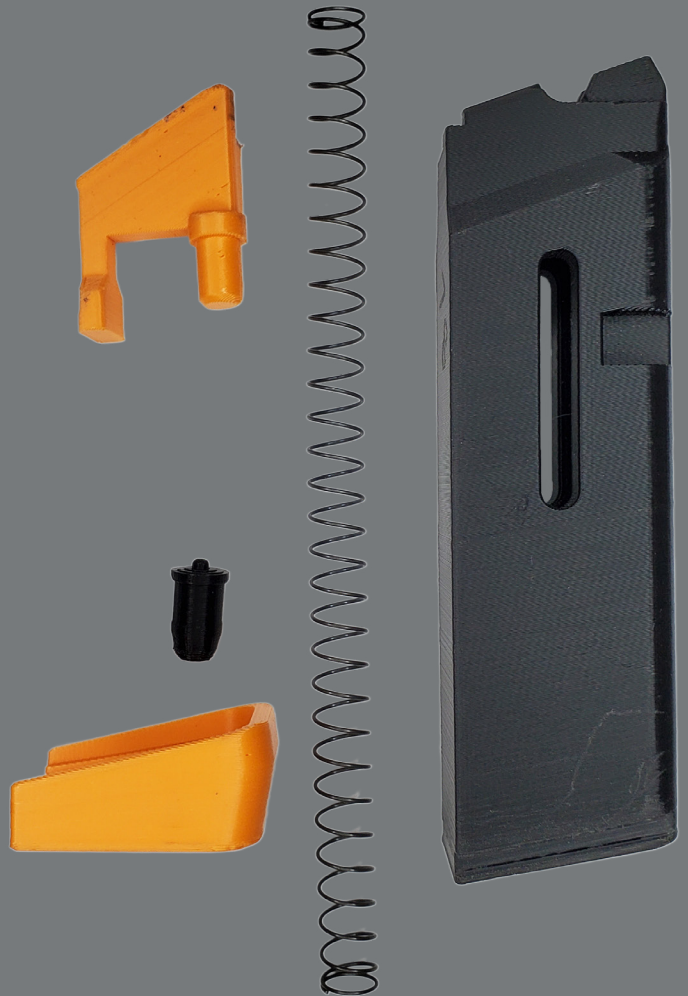
Part	Cost
Magazine Body	PLA+
Magazine Follower	PLA+
Baseplate	PLA+
Baseplate Lock	PLA+
Spring Options:	
Preferred	
AA 25rd (11") Spring	ea. \$1.50
AA 19-23 (6") Spring	ea. \$1.50
www.advantagearms.com/mm5/merchant.mvc?Screen=PROD&Product_Code=GLKMagSpring	
Alternatives	
BDM 11" AR15.22 Spring (5pc)	\$5.00
https://www.blackdogmachinellc.net/ciener-replacement-recoil-spring.aspx	

If you are unable to source these springs, the dimensions are 0.6x9.2x150mm for the AA 19-23
BlackDogs lists dimensions as "0.370 OD .312 ID .022 inch (wire) 11in long"
Use this information responsibly.

Assembly

It's 5 parts... do I have to spell it out for you?

Make sure you are using the appropriate parts for the magazine size. Insert appropriate follower, spring, and pinlock into the magazine body in that order. Pressing down on the spring/pinlock, slide your chosen baseplate over until it retains the spring, it should click into place on its own, otherwise use a small pin to give it a lil poke and it should snap into place.



Acknowledgments

Thanks to freeman1337, Dr._Death, gerald.katz and the rest of the team at DeterrenceDispensed for reaching out to me to help with the beta testing and release, as well as all the beta testers who helped test this on multiple conversion kits.

Special thanks to wickedmainah for their help developing and testing the 25rd extended magazine as well as the loading tool.

And thanks to you and the rest of the FOSSCAD community for pushing the boundaries of printing and showing such interest in this project.

Nostra Voluntas Unita
Our Will United