

The Gatalog Presents:



MOORE DAKKA

PRINTABLE SMITH AND WESSON M&P45 FRAME

BY GHOSTGUNSRPOOKY AND UBERCLAY



Introduction:

- ▶ The **Smith & Wesson M&P** (Military and Police) is a polymer-framed, short recoil operated, locked breech semi-automatic pistol introduced in the summer of 2005 by the American company Smith & Wesson. It uses a Browning-type locking system. While targeted at law enforcement agencies,^[2] the M&P is also widely available on the commercial market.
- ▶ The M&P is a hybrid evolution of the Smith & Wesson Sigma and Smith & Wesson SW99 design but does not share parts compatibility with the Sigma. The M&P design has an improved trigger and enhanced ergonomics that allow for end-user customization. An industry standard Picatinny rail and a higher grip has been afforded with an improved grip and beavertail. Many of the ergonomic study elements that had been incorporated into the Sigma and the Smith & Wesson SW99 were brought over to the M&P. The improved trigger weight and feel and the unique takedown method (not requiring a dry-fire pull of the trigger) were meant to set the M&P apart from the popular Glock pistols.

Who is Wes Moore?

- ▶ Wes Moore is the Governor of Massachusetts, and an enemy of Liberty and the Constitution. (a real MAsshole)
- ▶ As a typical elitist politician, he has worked to make it harder for the poor and impoverished to protect themselves by increasing the financial burden to carry a concealed weapon.
- ▶ He cares not for the constitutional protections that exist and has been found in repeated violation of them.
- ▶ Wes Moore and his family enjoy the protection of hired security that are immune to the restrictions that he would impose upon you and your family
- ▶ As an example of the Modern-Day Redcoat, this design is dedicated to him

PUTTING A GUN TOGETHER IS NO JOKE. FIREARMS ARE DANGEROUS TOOLS THAT MUST BE TREATED WITH CARE AND RESPECT. **YOU ARE RESPONSIBLE FOR YOUR SAFETY, AND THOSE SURROUNDING YOU** WHEN YOU WORK WITH OR OPERATE FIREARMS. FELLOW DEVELOPERS OR ENGINEERS CANNOT BE RESPONSIBLE OR LIABLE FOR WHAT YOU DO OR DON'T DO.

AS A GENERAL REMINDER, HERE ARE SOME RULES TO KEEP IN MIND:

ALWAYS TREAT A GUN AS IF IT IS LOADED. REMOVE THE MAGAZINE AND CHECK THE CHAMBER YOURSELF TO VERIFY THE GUN IS UNLOADED.

KEEP YOUR FIREARM ALWAYS POINTED IN A SAFE DIRECTION. NEVER POINT YOUR GUN AT ANYTHING YOU DON'T INTEND TO DESTROY.

BE AWARE OF WHAT IS IN FRONT AND BEHIND OF YOUR TARGET.

BUT SPECIFICALLY, FOR WORKING ON YOUR FIREARM, YOU SHOULD REMEMBER THE FOLLOWING TOO:

KEEP LIVE AMMO AWAY. USE SNAP CAPS OR DUMMY ROUNDS TO VERIFY FUNCTION OF YOUR FIREARM. NEVER KEEP LIVE AMMO AROUND YOUR WORKSPACE, AND CERTAINLY NEVER MIX THEM WITH YOUR DUMMY AMMO.

A CLEAN GUN IS A SAFE GUN. NEVER LEAVE YOUR FIREARMS UNCARED FOR TO FOUL OR DIRTY UP. DEBRIS CAN CAUSE MALFUNCTIONS, WHICH CAN BE DANGEROUS.

ALWAYS READ AND FOLLOW DIRECTIONS. DON'T IGNORE A WARNING OR FOLLOW INSTRUCTIONS OUT OF ORDER.

USE PRUDENT JUDGEMENT. IF SOMETHING DOESN'T ADD UP- USE COMMON SENSE. STOP, INSPECT, AND RE-EVALUATE YOUR PREVIOUS ACTIONS AND PROCEDURES.

Remember that it is our shared responsibility to be safe and smart with firearms and show the world there is a peaceful way to own guns – take the time to get training, to learn basic (and advanced) safety rules, and to share the hobby with everyone interested – those most scared of guns in the hands of the people are often the ones who have no experience with guns in the first place.



TOOLS AND SHOPPING LIST

To assemble this firearm, you will need:

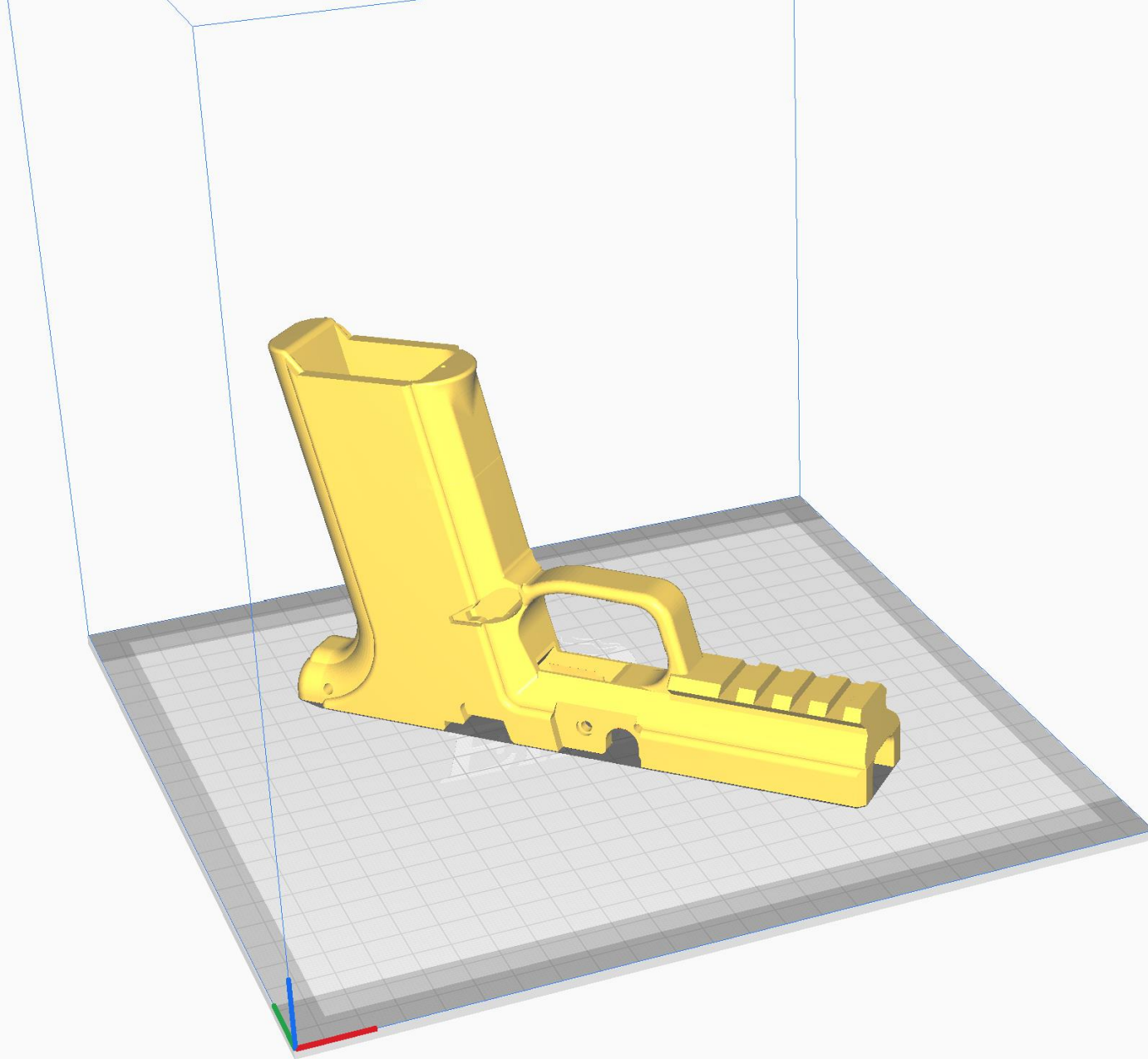
- **Gunsmithing Punch Set**
- **Small Hammer or Mallet**
- **Needle nose pliers**

You will need the following Hardware:

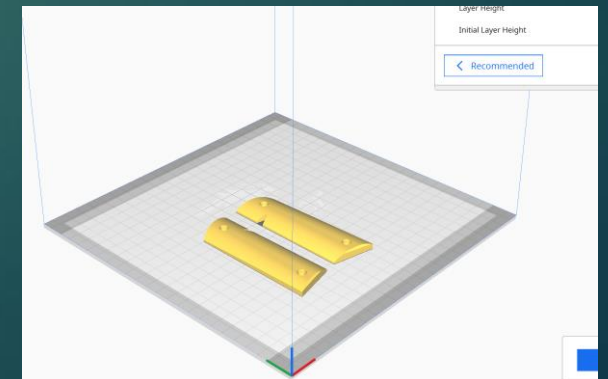
- **1) M&P45 parts kit**
- **1) M&P45 magazine**
- **1) Glock magazine spring or 2mm wire stock**
- **4) 6mm M4 SHCS if using printed grips**

- ▶ This is a typical M&P45 parts kit. 1.0 or 2.0 will work.
- ▶ The Shield45 kits will NOT work





Printer orientation
Printer settings-
6-8 walls
100% infill
220 extruder temp
60 bed temp



Explanation of files



Full-size mag takes printable grips

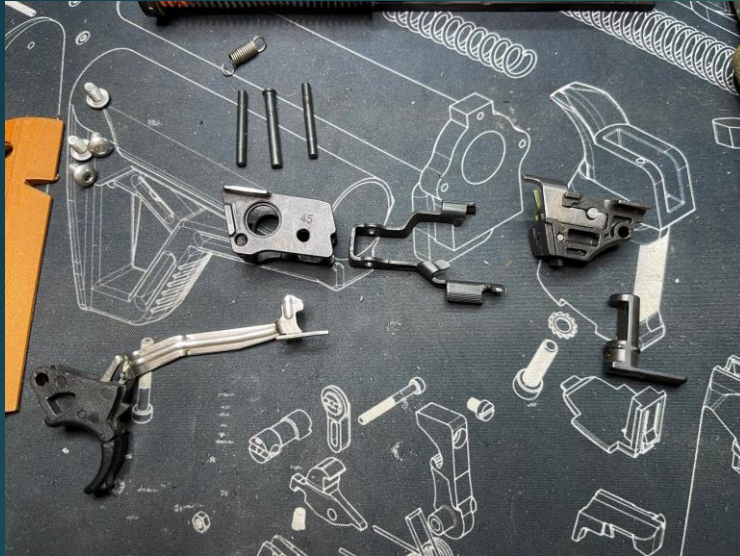


Full-size mag no grips



Compact mag no grips

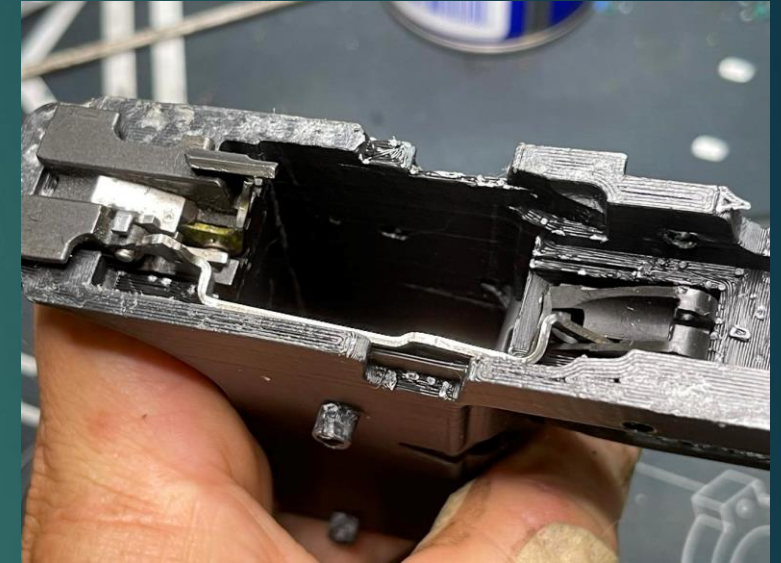
Assembly Steps



Gather your parts together



Install the rear rail block and sear



Drop the trigger into place. Insert the rear of the trigger bar into the gap under the rear rail.

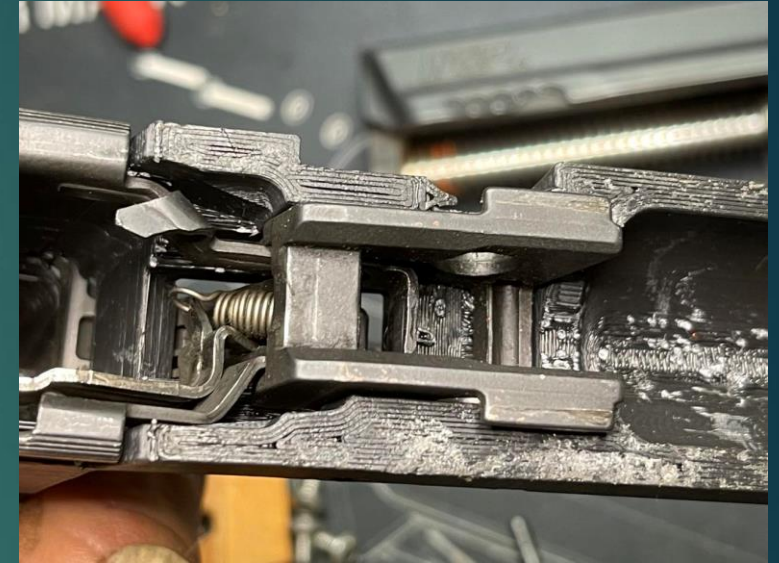
Assembly Steps



Install the trigger spring onto the trigger bar. One loop should be more open than the other. This loop goes onto the bar. The closed loop will go around the trigger pin.



Place the slide lock into the frame around the trigger.

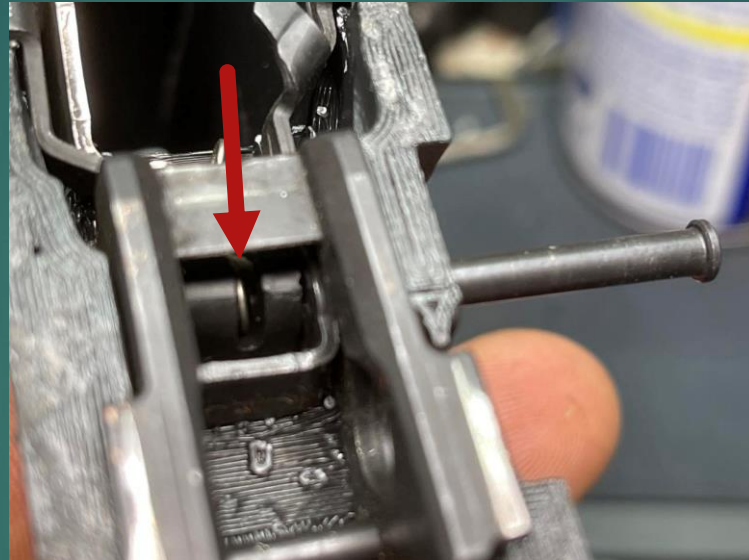


Then place the locking block into the frame over the trigger and the slide lock.

Assembly Steps



Install this pin first



Then begin to install the trigger pin. Note the position of the spring loop that will go over it.



Slowly tap the trigger pin into place. As you approach the spring coil, apply pressure to the backside of the spring to help the loop go over the pin. Take your time.

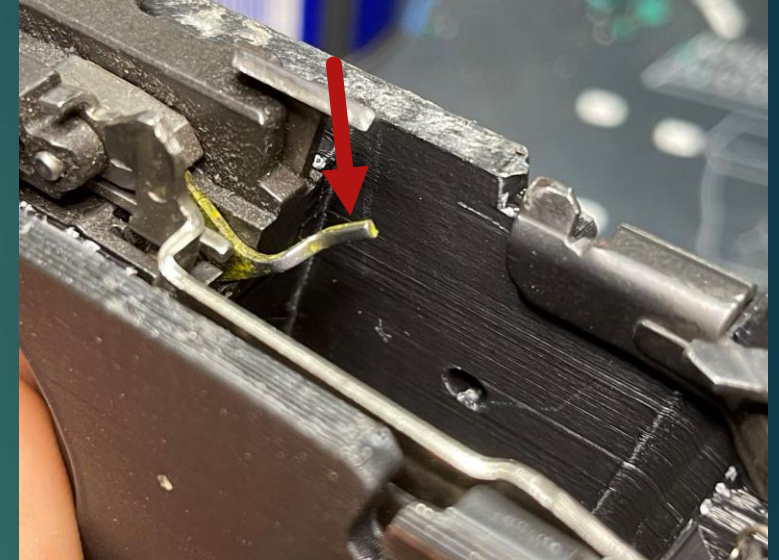
Assembly Steps



Install the takedown lever



For the mag catch I used a Glock mag catch spring. Using a pair of needle nose pliers, I heat the end of the spring with a lighter and press it into the hole at the bottom of the cutout. Then install your mag catch. You may need to 'tune' your catch by bending it slightly.



Flip this lever forward when installing the slide.

Assembly Steps



You are now ready to install the slide.



If using grips install them. I used very short (6mm) M4 SHCS.



Credits

- ▶ Special thanks to ghostgunsrspooky for his seed frame
 - ▶ The Deterrence Dispensed beta room
 - ▶ Doo.bee for the compact mag work
-
- ▶ And all the 3D2A supporters out there. Together we are winning.